

# LED NEON FLEX

## NDR1004





**Features**

- Color options: Single color.
- Using half-pack extrusion, strong weather resistance and good heat dissipation performance
- Super short cuttable length, top bending, and easy to shape.
- Can be connected with a dimmer.
- Warranty: 5 years indoor.
- Customization: multiple spec options, can be customized upon requirements.



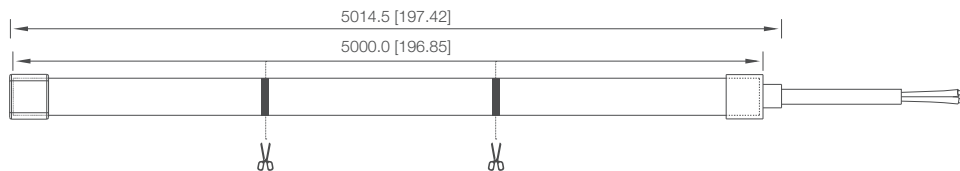
**Optical & Electrical Parameters**

Model No.	Voltage	Beam Angle	CRI	Color	Lm/m	Lm/W	Rated Power (W/m)
NDR1004-Single color	24V DC	120°	>90	2200K	1060	55.4	19.2
				2500K	1243	69.0	
				2700K	1060	61.0	
				2900K	1128	62.9	
				3500K	1426	79.7	
				4000K	1147	62.6	
				5000K	1241	67.8	
				6000K	1239	67.1	

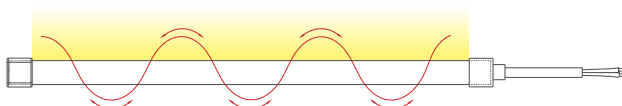
Model No.	LED QTY (pcs/m)	Standard Run	Min. Cuttable Length	Working Temperature	Storage Temperature
NDR1004	420	5000mm	16.66mm	-20~+60°C	-20~+70°C

**Profile Drawings**

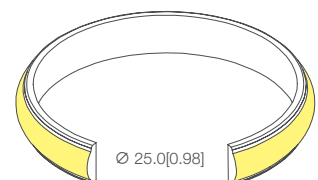
Unit:mm[inch]



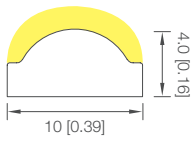
Bend direction



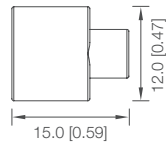
Bending Diameter



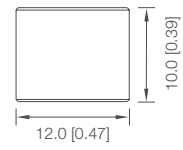
Sectional view



Front cap / Glue Process (IP54)

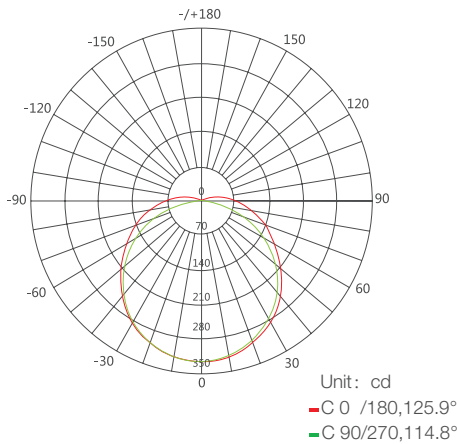


Closing End-cap / Glue Process (IP54)



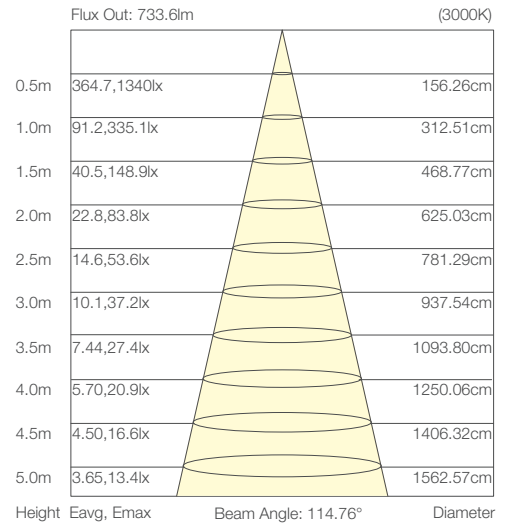
Note: Within 5m, the strip can be customized according to the integer multiple of the Min. cuttable length

## Luminous Intensity Distribution Diagram



AVERAGE BEAM ANGLE (50%): 120.3°

## Average Illumination

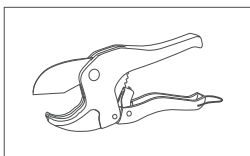


Note: the two figures above are tested with the sample NDR1004 at CCT 3000K, for other data, please consult sales rep.

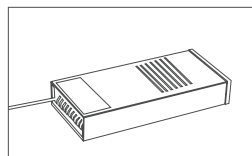
## Recommended power supply upon working length

Model No.	NDR1004	
Working Length(m)	1	5
Measured Current (A)	0.8	3.25
Rated Voltage (DC V)	24	24
Measured Power(W)	19.2	78.0
Recommended Power Supply(W)	30	100
Power Supply Mode	Single Feed	Single Feed

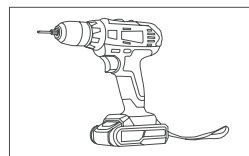
## Products and Tools



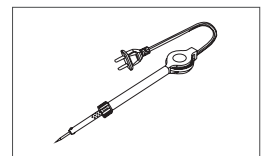
Cutter



LED power supply



Electric drill



Electric iron

Product accessories



**ASY-NDR1004-N00NNH-EC**

Item: Front cap  
 Dimensions L\*W\*H: 15\*12\*6mm  
 Quantity (5m): 2pcs  
 Free/Optional: Free



**ASY-NDR1004-N00NNX-EC**

Item: Closing End-cap  
 Dimensions L\*W\*H: 10\*12\*6mm  
 Quantity (5m): 2pcs  
 Free/Optional: Free



**ASY-NDR1004-A1NN1000-MT**

Item: Aluminum Channel  
 Dimensions L\*W\*H: 1000\*13.5\*3.7mm  
 Quantity (5m): --  
 Free/Optional: Optional



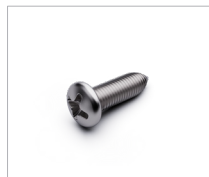
**ASY-NDR1004-F00NNH-EC**

Item: Wire-to-Board Connector  
 Dimensions L\*W\*H: 24.3\*14.6\*7.7mm  
 Quantity (5m): --  
 Free/Optional: Optional



**ASY-NDR1004-F00NNM-EC**

Item: Board-to-board connector  
 Dimensions L\*W\*H: 19.55\*14.6\*7.7mm  
 Quantity (5m): --  
 Free/Optional: Optional



**Screws**

Item: Screws  
 Dimensions L\*W\*H: PA3\*10mm  
 Quantity (5m): --  
 Free/Optional: Optional

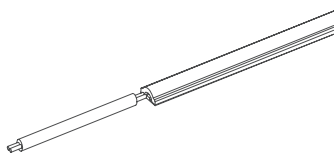


**WR-7516**

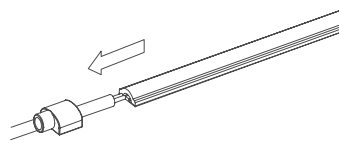
Item: Silicone Glue  
 Dimensions: 45g/pc  
 Quantity (5m): --  
 Free/Optional: Optional

Installation

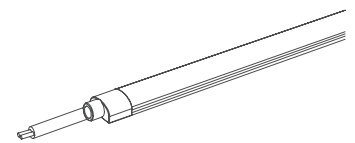
Front cap installation



Weld the wire to the PCB board.

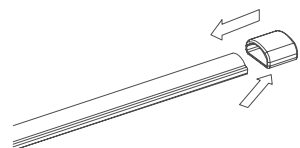


Apply waterproof glue to the front cap, then push the cap into the strip.

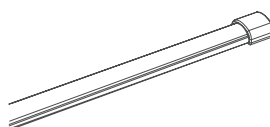


Wipe off the excess glue and wait for the glue to solidify.

Closing-end cap installation



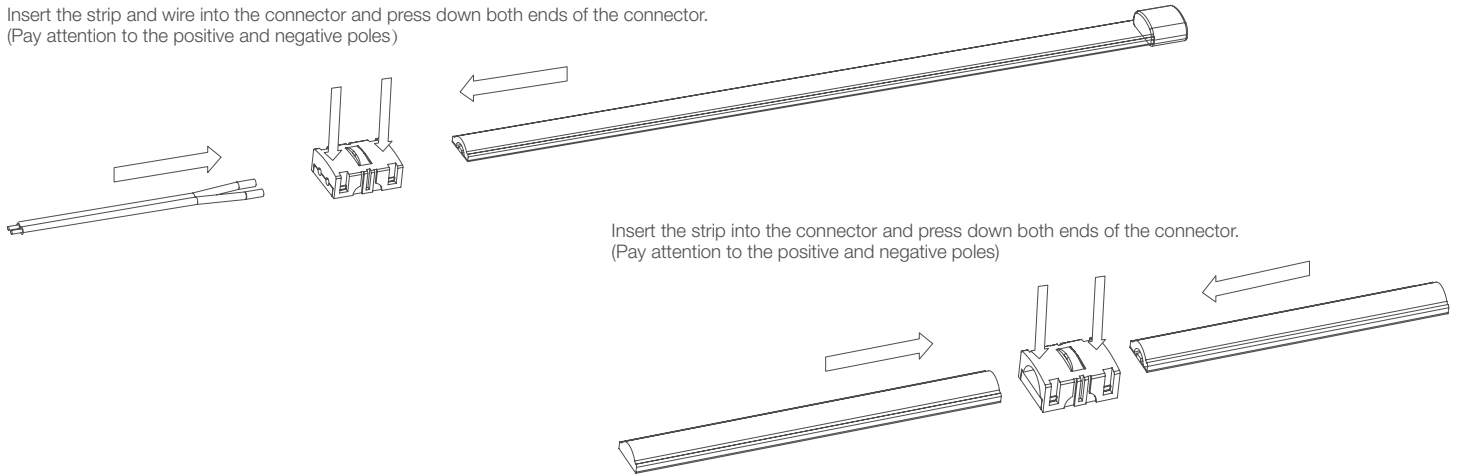
Apply waterproof glue to the end cap, then push the cap into the strip.



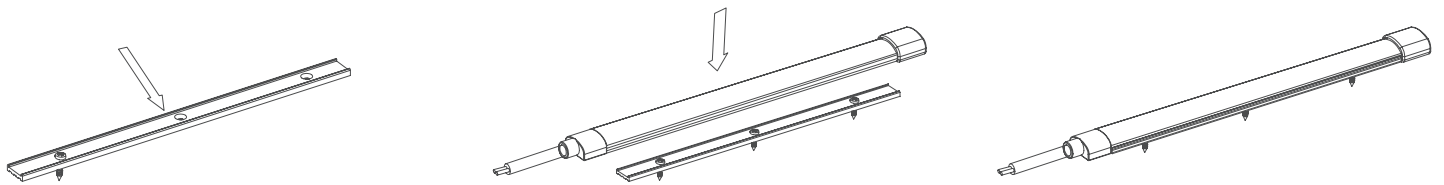
Wipe off the excess glue and wait for the glue to solidify.

Connector installation

Insert the strip and wire into the connector and press down both ends of the connector.  
(Pay attention to the positive and negative poles)



Aluminum channel installation



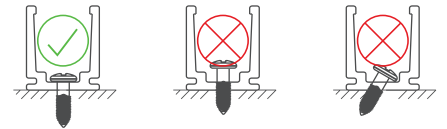
Screw the aluminum channel to the mounting surface.

Press the strip into the aluminum channel

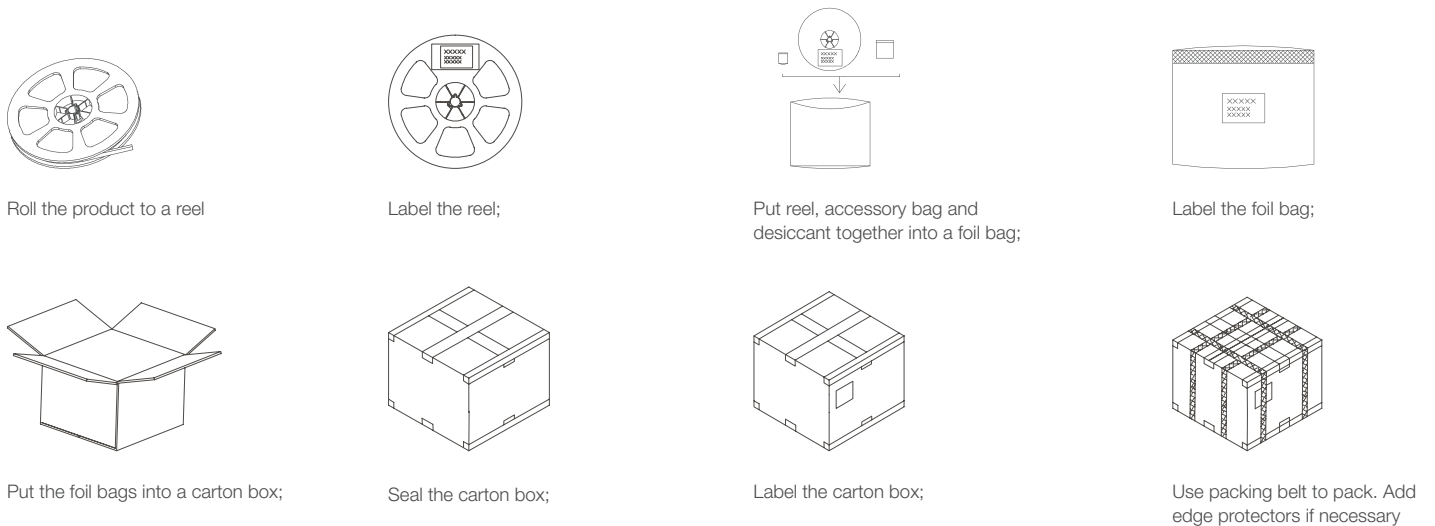
Finished

Notes:

- At the welding place, please pay attention to the positive and negative poles of the wire and the strip;
- Each connection must use 10g silica gel for waterproof and insulating treatment;
- The screws must be vertical to the mounting surface and be fastened, as shown in the figure on the right;
- Please choose suitable operation steps according to the actual needs;
- During mounting, please pay attention to the min bending diameter, and best to use original factory accessories;
- More information, please feel free to consult us;



Packaging Information



Packaging information

Model No.	Product Size L*W*H (mm)	Carton Size (mm)	Meter/Reel	Reel/Carton	Gross Weight (kg)
NDR1004	5000*10*4	550*400*340	5	60	16.50 (1± 10%)

- Each roll(5m) of this product is loaded with a reel, and the reel is packed in an aluminum foil bag, and finally in an outer box.
- For other customized length packaging, please ask our sales rep.
- The above-mentioned packaging quantity and weight are only for the illustrated packaging method. For other packaging methods, the packaging quantity and weight will be different. The actual weight is subject to the actual product.

Reliability test

Project	Reference standards	Category	Test conditions	Outcome
Environmental test	Blueview standard	Temperature cycling test	Th = 60°C/4h, Ta =20°C/1H, TL=- 40°C/4h,continuous cycle lighting	Pass
		High temperature resistance test	Simulated TH=60 °C, continuous power on	
		Room temperature aging test	TA=25°C, continuous power on	
Mechanical strength testing	Blueview standard	Tensile test	Fix both ends of the sample on the upper and lower clamps of the tensile machine and record the tensile value of the product when the light is off.	Pass
		Twisting test	Light on the sample, forward and reverse rotation 360° one time each, a total of 10 times.	
		Room temperature bending test	Bending diameter 60mm, continuous power on under room temperature	

Warning Mark

<p>Cuttable identifier</p>	<p>Neat and smooth cut</p>	<p>Insert a stick on the reel and place it on the packing box, and rotate the reel to get the product.</p>	<p>use in convex direction</p>
<p>Use in concave direction</p>	<p>Side bending</p>	<p>Do not make irregular cuts.</p>	<p>Do not use in distortions</p>
<p>Do not bend many times, for it can endanger electronic lines.</p>	<p>Do not use on wringing (twist)</p>	<p>Do not bend at right angles</p>	<p>Do not throw or pull when taking products</p>

Note:  
 The cutting mark is on the PCB, and the cutting position can be identified in the product cutting line window or the laser mark on the product surface;  
 After unpacking, use warning signs during handling and installation, and rigorous operation can bring a pleasant experience;

## Warning

---

- Do not disassemble or retrofit the light. Do not touch the surface of the light with a sharp object.
- Do not do live-line working during installation, especially for high voltage product.
- Do not use any organic chemical solvents.
- Use neutral glass adhesive to fix this product and it needs to be dried 4 hours in the open environment after operation.
- Treat the ends and the circuit connection points that are not connected to the main line with insulation, waterproof, and anti-corrosion in the installation.
- Use 18AWG (0.75mm<sup>2</sup> cross-sectional area) or thicker core wire to avoid adverse consequences caused by overheating, if the power cable need to lengthen.
- Make sure the input voltage meets the requirements and lines are connected correctly before lighting on
- This product is for signage, and do not use as general lighting.
- Series connection within the max run.
- The length of the power cable between the power supply and the led strip should not exceed 2 meters. Otherwise, large circuit loss will lead to inconsistent brightness.
- Installation, maintenance and repair should be operated by a qualified technician.

## Attentions before installation

---

- Before installation, check that the product parameters are consistent with the requirements (Seeing product specifications or product labels)
- Load voltage, current, power and power supply should be matched with the product.
- Follow the instructions of wiring diagram (first connect the load and then the power supply) to avoid short circuit
- Make sure the correct connection of positive and negative poles between products and power supply. Otherwise, the light will not be on.
- Make sure the power cord firmly screwed into the terminal and it should not be pulled out by hands.
- The terminal should have waterproof and anti-corrosive treatment.

## Statements and Recycling

---

### Packaging information

- Repair should be operated by a qualified technician or supplier, if the external circuit or main line of this product is damaged.
- The parameters given in this manual are typical values and for reference only
- All illustrations and drawings in this manual are for reference.
- This product is subject to change without notice.

### Recycling

- LED lighting products belongs to electronic products, please do recycling treatment according to the relevant WEEE directives.
- 

### BLUEVIEW ELEC-OPTIC TECH CO.,LTD

Tel: +86-28-8148 0011     Web.: Web.: www.blueviewled.com     Add.: No. 1000, Section 2, Konggang 2nd Road, Shuangliu, Chengdu 610207, Sichuan, CHINA  
 Fax: +86-28-8148 1258     Email: sales@blueviewled.com